

Grafham Court

Edgware Green

£1,500 Per month

A one bedroom corner flat with a private balcony and communal gardens available immediately with Davidson Frost-Wellings.

The flat is available with a large reception room, a galley kitchen, a private balcony, a large family bathroom and a bedroom with built-in wardrobes. In a building with a lift and a communal courtyard garden.

Available Immediately.

Deposit of £1703 (based on the full asking price).

Barnet Council Tax Band D.

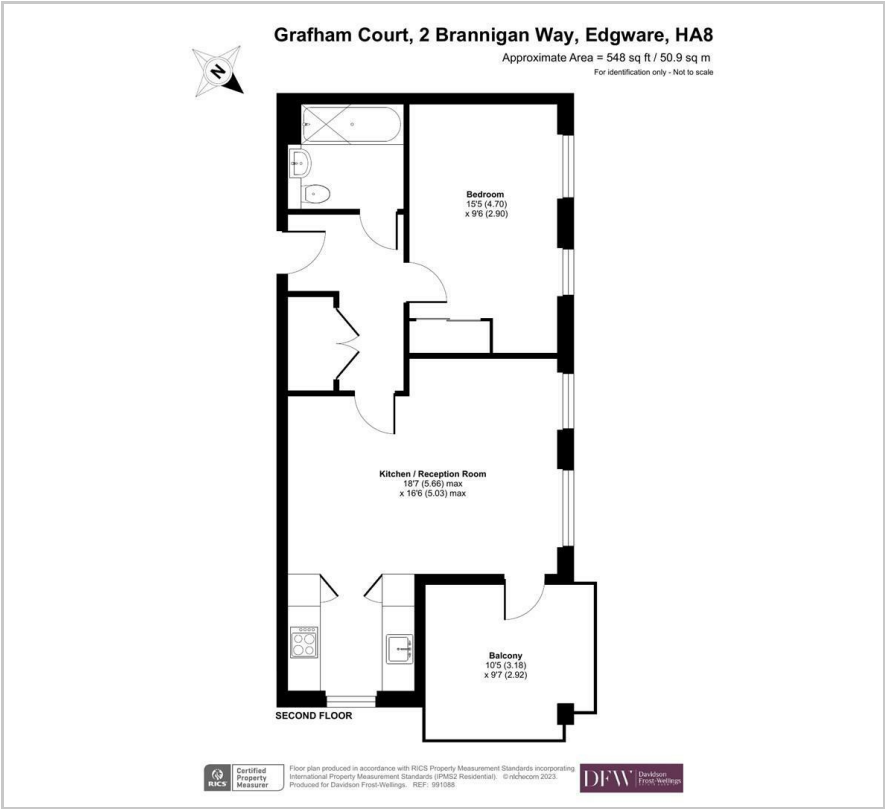
- Private Balcony
- Communal Garden
- Modern Building
- One Bedrooms
- Available Immediately
- No Parking

Viewing

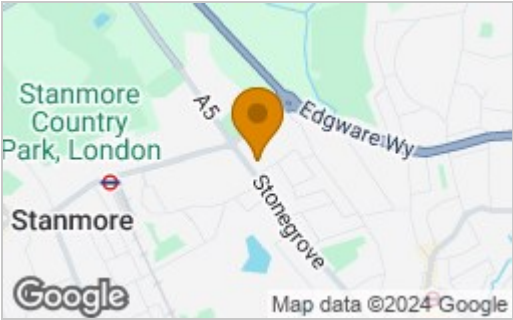
Please contact our Davidson Frost-Wellings Office on 020 8954 8806 if you wish to arrange a viewing appointment for this property or require further information.



Floor Plan



Area Map



Energy Efficiency Rating		
	Current	Potential
Very energy efficient - lower running costs		
(92 plus) A		
(81-91) B	84	84
(69-80) C		
(55-68) D		
(39-54) E		
(21-38) F		
(1-20) G		
Not energy efficient - higher running costs		
England & Wales	EU Directive 2002/91/EC	



These particulars, whilst believed to be accurate are set out as a general outline only for guidance and do not constitute any part of an offer or contract. Intending purchasers should not rely on them as statements of representation of fact, but must satisfy themselves by inspection or otherwise as to their accuracy. No person in this firms employment has the authority to make or give any representation or warranty in respect of the property.